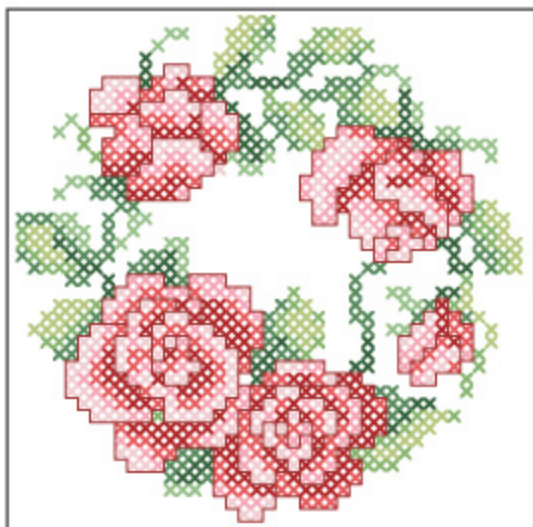


The DMC floss used in this design can be purchased on our Janlynn.com website for 39 cents a skein.



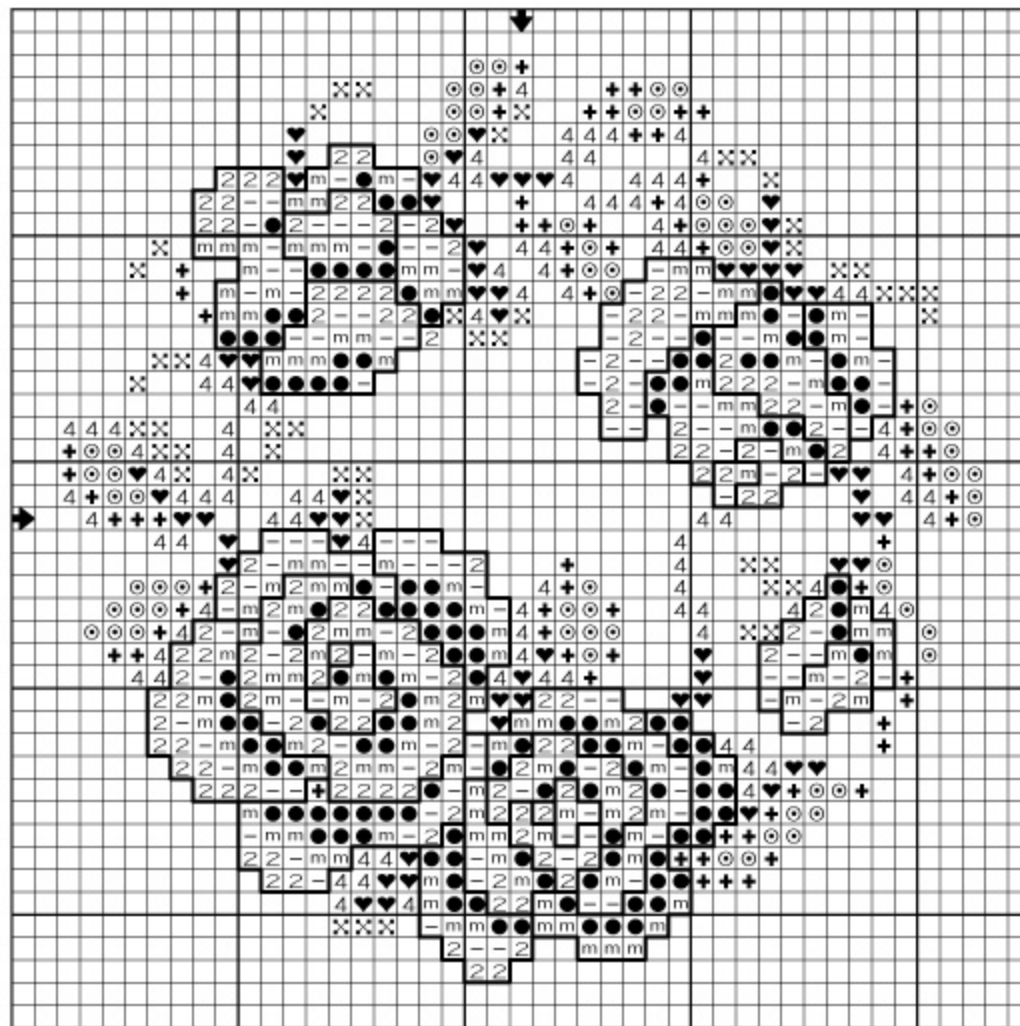
Design Size: 41w X 41h stitches **14 / 28 count fabric**
 11 Count, 3-5/8" w x 3-5/8" h Cross stitch - **two ply**
 14 Count, 2-7/8" w x 2-7/8" h Back stitch - **one ply**
 18 Count, 2-1/4" w x 2-1/4" h

Cross stitch

DMC	Color
♥	319 Pistachio Green - Very Dark
●	321 Christmas Red
4	367 Pistachio Green - Dark
✕	368 Pistachio Green - Light
2	963 Dusty Rose - Ultra Very Light
+	989 Forest Green
⊙	3348 Yellow Green - Light
m	3705 Melon - Dark
-	3708 Melon - Light

Back stitch

—	304 Christmas Red - Medium
---	----------------------------



This design is not to be duplicated, sold, modified or redistributed in any medium, including scanning and posting on the internet without written permission from The Janlynn Corporation.

The Janlynn Corporation 2070 Westover Road, Chicopee, MA 01022 USA
 800-445-5565 (USA & Canada) ~ 413-206-0002 (International)
 www.janlynn.com ~ Email: customerserv@janlynn.com